



CATERHAM

INTRODUCING

CSR
TWENTY

Caterham proudly unveils the Seven CSR

Twenty, a limited-edition masterpiece commemorating 20 years of the iconic CSR chassis. Hand-built in Caterham's purpose-built HQ in Dartford, this exceptional vehicle showcases the epitome of British craftsmanship and engineering, with only 20 exclusive examples available for discerning enthusiasts in the UK.

The CSR Twenty pairs the exhilarating 210bhp 2.0 litre Ford Duratec engine with a meticulously refined chassis, delivering an unmatched driving experience. Achieving 0-60 mph in just 3.9 seconds and a top speed of 136 mph, this model sets a new standard in sports car performance.

Inside, the interior features a satin carbon dashboard, opulent leather finishes, and distinctive CSR Twenty branding, exuding both sophistication and luxury. The striking exterior boasts a two-tone Union Flag grille and bespoke Vulcan 15" alloys, making the CSR Twenty not just a car, but a tribute to two decades of Caterham's innovation and passion.



3.9 0-60 MPH
SECS

136 TOP SPEED
MPH

Available exclusively in the large chassis form, the increased space not only accommodates the advanced suspension setup but also provides more room for passengers and luggage, further enhancing its touring capabilities.



Fully-independent double-wishbone rear suspension enhances rear-end grip, ride comfort, and stability, allowing the CSR Twenty to maintain exceptional performance across all road conditions. It delivers a dynamic and confident drive, making it the ultimate machine for point-to-point performance.

Front inboard-mounted suspension offers precise, responsive steering, ensuring a direct and engaging driving experience that's perfect for long-distance road trips.



INTERIOR

Just as the exterior of the CSR Twenty showcases a contemporary take on the Seven design, the extensive use of satin carbon fibre inside further enhances the modern, cohesive aesthetic of this Seven, adding a sleek and purposeful touch to its cabin.

The unique CSR Twenty seats and tunnel top, crafted from premium Muirhead leather, Alcantara, and intricate embroidery, elevate the interior with their refined materials, creating a more comfortable and luxurious environment.



EXTERIOR

Body Colours

Two carefully selected colours, Kinetic Silver and Dynamic Grey, are designed to shimmer in the sunlight, adding a layer of depth that's sure to catch the eye.

Feature Highlights

To add an extra pop of personality, the highlight stripe, Seven grille emblem, and roll bar are available in a range of colours – from subtle tones to bold hues – allowing you to tailor your car to your exact preferences.



Brake Calipers

Bright red brake calipers provide an additional flash of colour on the exterior, with their design subtly referencing the iconic Twenty logo.



Vulcan Alloys

Exclusive to CSR models, the 15" Vulcan wheels are finished in satin grey with diamond-cut details. These wheels blend form and function, offering a lightweight design that reduces unsprung weight, enhancing driving dynamics while maintaining a modern, sleek look.



Mohair

Mohair weather equipment not only delivers a superior aesthetic but also a luxurious feel, adding a touch of refinement to the car's overall presentation.

STANDARD EQUIPMENT

- Limited to 20 cars in the UK with an individually numbered plaque
- Large chassis
- Pushrod inboard front suspension with aero wishbones
- Fully independent rear suspension
- 5-speed transmission
- Dry sump oil system
- 15" Antracite Vulcan alloy wheels (6.5" wide front and 9" wide rear) mounted on TOYO R888R tyres
- Uprated ventilated brakes with quad piston calipers and uprated brake master cylinder
- Brake calipers finished in red
- Choice of Kinetic Grey or Dynamic Silver paint finish including painted headlamps
- Colour highlight consisting of painted stripe, roll cage and 7 grille in choice of eight colours
- 620 style nose cone
- Mohair weather equipment
- Bespoke interior using black and grey fine grain leather, perforated alcantara and red stitching
- Satin carbon elements:
 - Dashboard - 620 style
 - Aero cycle wings
 - Rear wing protectors
 - Rear wing flares
 - Sill protectors
 - Bow tube protectors
 - Indicator pods
 - Engine cover
 - Nosecone aero winglets
- Union Jack grille - silver
- Chassis finished in Kennet Grey
- Black Caterham rear badge
- Clear indicator lenses
- High intensity LED headlights with LED side lights and rear lights
- Heater
- 4-point race harnesses
- MOMO steering wheel
- Component finish - black
- Boot cover - Mohair
- Shift light

PAINT

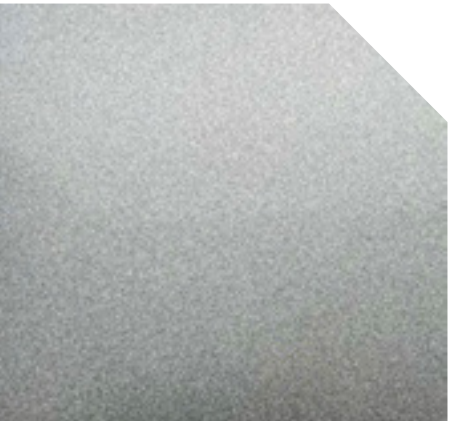


Dynamic Silver



Kinetic Grey

HIGHLIGHT PAINT - PAINTED STRIPE, 7 GRILLE & ROLLBAR



Dynamic Silver



Kinetic Grey



Purple Reign



Intensity Blue



Crimson Charge



Citrus Flake



Power Gild



Solar Flare





Contact your local dealer to secure your CSR Twenty today.

caterham.com